

# C.I.P.

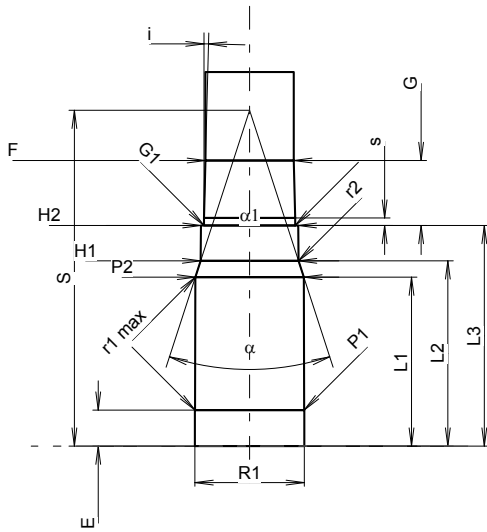
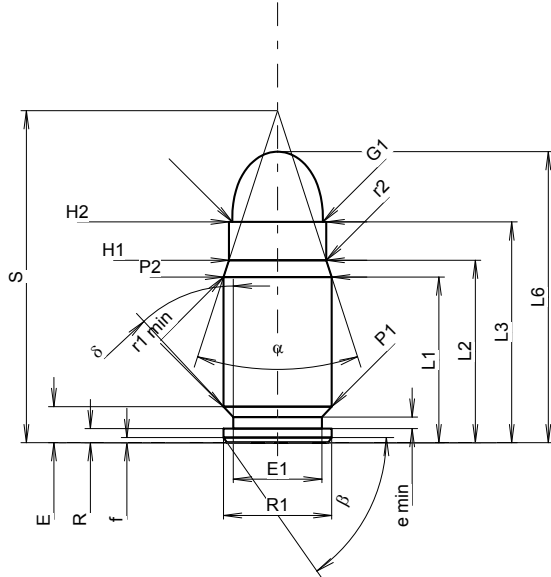
# 357 SIG

Country of Origin: US

TAB. IV

Date 95-03-09

Revision 08-09-23



Scale 1.33:1

Dimensions in << mm >>  
Dimensions and Tolerances for Proof Barrels  
see Appendix CR 1.**CARTRIDGE MAXI****Lengths**

L1 <sup>1)</sup>	=	16.48	-0.20
L2 <sup>1)</sup>	=	18.16	-0.20
L3 <sup>1)</sup>	=	21.97	
L4	=		
L5	=		
L6	=	28.96	

**Case Head**

R	=	1.40	
R1	=	10.77	
R3	=		
E	=	3.59	
E1	=	8.81	
e min	=	1.14	
delta	=	43°	
f	=	0.51	
beta	=	55°	

**Powder Chamber**

P1	=	10.77	
P2 <sup>1)</sup> *	=	10.77	-0.20

**Junction Cone**

alpha *	=	36°	
S *	=	33.05	
r1 min	=	1.52	
r2	=	3.81	

**Collar**

H1 *	=	9.68	
H2 <sup>1)</sup>	=	9.68	

**Projectile**

G1 <sup>1)</sup>	=	9.03	
G2	=		
F	=		
L3+G <sup>1)</sup>	=	28.44	

**Pressures (Energies)****Method Transducer**

Pmax	=	3050 bar	
PK	=	3508 bar	
PE	=	3965 bar	
M	=	10.50	

**Miscellaneous Dimensions**

Fe <sup>1)6)</sup>	=	0.20	
delta L	=		

Notes: 1) Check for safety reasons  
6) Headspace on Case Mouth  
\* Basic dimensions**CHAMBER MINI****Lengths**

L1	=	16.82	
L2	=	18.44	
L3 <sup>1)</sup>	=	21.97	

**Breech**

R	=		
R1	=	10.88	
R2	=		
R3	=		
r	=		

**Powder Chamber**

E	=	3.59	
P1 <sup>1)</sup>	=	10.86	
P2 *	=	10.80	

**Junction Cone**

alpha <sup>1)</sup> *	=	36°	
S *	=	33.44	
r1 max	=	1.27	
r2	=	3.81	

**Collar**

H1 *	=	9.75	
H2 <sup>1)</sup>	=	9.70	

**Commencement of Rifling**

G1 <sup>1)</sup> *	=	9.09	
G <sup>1)</sup>	=	6.47	
alpha 1 *	=	180°	
h	=		
s	=	0.74	
i <sup>1)</sup> *	=	1°30'	
w	=		

**Barrel**

F <sup>1)</sup> *	=	8.79	
Z <sup>1)</sup>	=	9.02	

**Grooves**

b	=	2.69	
N	=	6	
u	=	406.40	
Q	=	62.57	mm <sup>2</sup>